

Q/NDL 189

# 使用说明书

No.LM888

## 合格证

检验员：\_\_\_\_\_

生产日期：\_\_\_\_\_

保留备用

DELI GROUP CO., LTD.

[Http://www.nbdeli.com](http://www.nbdeli.com)

1.0  
2022 10

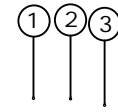
1.

拆开包装箱后，请检查

3.

---

4



1.

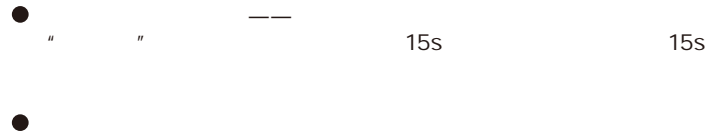
/

:



2.

:



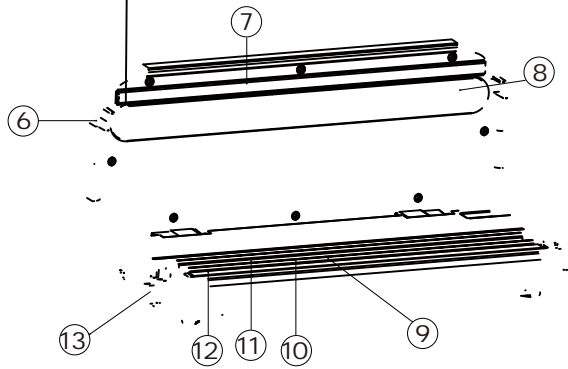
3.

5

4.

:





5.



- 60kPa  
- 35kPa

6.

(

7.

8.

9.

10.

11.

12.

13.

14.

4.

1.

2.

3.

图1

3- 5mm

4.

图2

5.

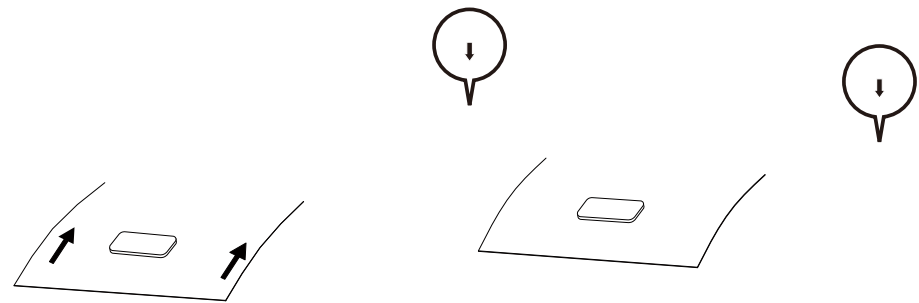
" " " "

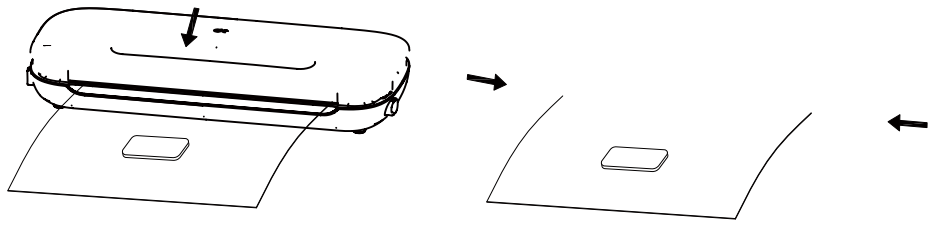
6.

图3

7.

图4

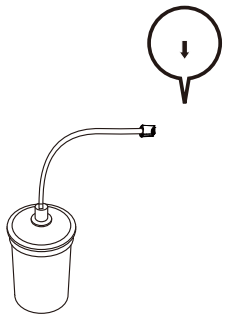




- 1.
- 2.
- 3.
- 4.
- 5.

图5

" "



- 
- 
- 

1

5.

- 1.
- 2.
- 3.
- 4.
- 5.
- 6.
- 7.
- 8.

1

100

60

9.

10.

11.  $2/3$

6.

---

1.

2.

3.

1.

2.

3.

4.

5.

1.

2.

3.

4.

1.

2.

3.

